



Port of
HOOD RIVER

INDUSTRIAL/COMMERCIAL FACILITIES • AIRPORT • INTERSTATE BRIDGE • MARINA

1000 E. Port Marina Drive • Hood River, OR 97031 • (541) 386-1645 • Fax: (541) 386-1395 • portofhoodriver.com • Email: info@portofhoodriver.com

AIRPORT ADVISORY COMMITTEE

Thursday, July 18, 2024

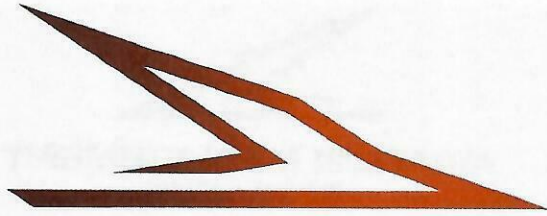
4:00-5:30 pm

PORT CONFERENCE ROOM.

(Chair: Dave Koebel - Vice-Chair: Margo Dameier)

1. Roll Call and Introductions 5 min.
2. Additions/Modifications to Agenda 5 min.
3. Approval of Minutes 5 min.
4. FY25 Airport Budget/Fees 20 min.
5. Project Updates 20 min.
North Apron Development – Private development
6. Discussion topics 20 min.
Minimum Standards – Committee's review/comments
Terminal Building Ideas
MIS ADSB Reporting installation
Stop Way ROI plans
Stand alone Airport website
REIL's
AAC term lengths
7. Stakeholder Updates 15 min.
 - i. FBO
 - ii. WAAAM
 - iii. HR Soaring
8. New Business/Public Comment 15 min.

Adjourn



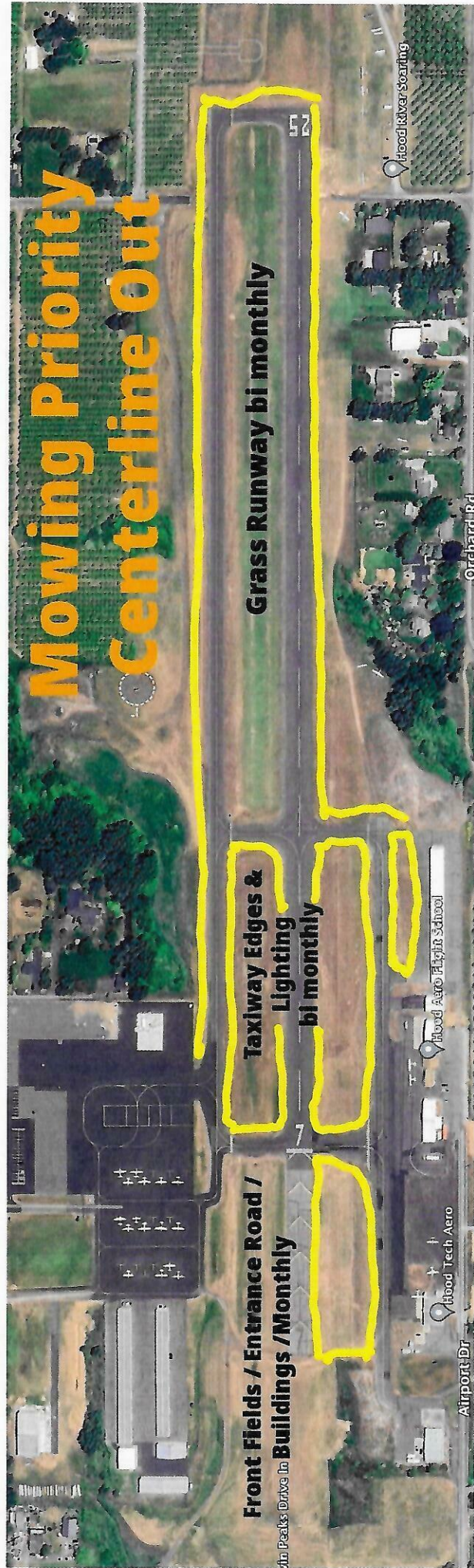
AVIATION MANAGMENT SERVICES

Monthly Report

June 2024

- May Flight Numbers closed out with TBD operations, up from last month. I just received the equipment to install to start monitoring and counting the traffic.
- The South Apron Turf Taxiway and T Hangar SOW and Fee review submitted with the FAA.
- Working with groundskeeping companies to evaluate the cost benefit of using contract labor.
- Working with Tracy May and Precision Approach Engineering to evaluate and ensure projects continue forward as planned.
- Working with ODAV creating a letter of commitment for a regional grant opportunity. (OPAL) smart grant.
- Building maintenance checklist and templates for daily operations.
- Met with a developer to build hangars. Details to soon follow
- Evaluating options on Collins building.

Mowing Priority Centerline Out



Front Fields / Entrance Road /
Buildings / Monthly

Taxiway Edges &
Lighting
bi monthly

Grass Runway bi monthly

Mowing Priority
Centerline Out

52

Airport Dr

Hood Tech Aero

Hood Aero Flight School

Orchard Rd

Hood River Soaring

Mowing Priority Centerline Out

Front Fields / Entrance Road /
Buildings / Monthly

Taxiway Edges &
Lighting
bi monthly

Grass Runway bi monthly



Airfield Reports (DLS)

Operations (764)

Dashboard

Summary

Weather

Aircraft on Field (35)

Current Date Range: 7/9/2024 - 7/16/2024

Filter

Show 50 entries

Search:

Previous 1 2 3 4 5 ... 16 Next

Excel Export (dashboard.cfm?locationid=DLS&start=7/9/2024&end=7/16/2024&gjeExcel)

Local Time Runway Registration Callsign AC Type Engine Type Manufacturer Model MGLW Certification

07/16/24 08:59	DEPARTURE 31	N734KU	N734KU	Single-Prop	Reciprocating	CESSNA	172N	2150	Track (https://aero.motioninfo.com/secure/map/?icao=a9dadcb&lat=45.61936&lon=-121.16828&zoom=8&ShowTrace=2024-07-16&leg=1×tamp=1721145599)	Replay (https://aero.motioninfo.com/secure/map/?reply=2024-07-16-15:59&lat=45.61936&lon=-121.16828&zoom=8)
07/16/24 08:39	ARRIVAL	N191CH	N191CH	Helicopter	Turbo-shaft	BOEING V-COLUMBIA HELICOPTERS	107-II	2450	Track (https://aero.motioninfo.com/secure/map/?icao=a16c1c&lat=45.61936&lon=-121.16828&zoom=8&ShowTrace=2024-07-16&leg=0×tamp=1721144367)	Replay (https://aero.motioninfo.com/secure/map/?reply=2024-07-16-15:37&lat=45.61936&lon=-121.16828&zoom=8)
07/16/24 08:37	DEPARTURE	N191CH	N191CH	Helicopter	Turbo-shaft	BOEING V-COLUMBIA HELICOPTERS	107-II	2450	Track (https://aero.motioninfo.com/secure/map/?icao=a16c1c&lat=45.61936&lon=-121.16828&zoom=8&ShowTrace=2024-07-16&leg=1×tamp=1721144245)	Replay (https://aero.motioninfo.com/secure/map/?reply=2024-07-16-15:37&lat=45.61936&lon=-121.16828&zoom=8)
07/16/24 08:32	DEPARTURE 13	N7694R	N7694R	Single-Prop	Reciprocating	BEECH	C23	2280	Track (https://aero.motioninfo.com/secure/map/?icao=aa65eb&lat=45.61936&lon=-121.16828&zoom=8&ShowTrace=2024-07-16&leg=1×tamp=1721143947)	Replay (https://aero.motioninfo.com/secure/map/?reply=2024-07-16-15:32&lat=45.61936&lon=-121.16828&zoom=8)
07/16/24 08:31	ARRIVAL 13	N7694R	N7694R	Single-Prop	Reciprocating	BEECH	C23	2280	Track (https://aero.motioninfo.com/secure/map/?icao=aa65eb&lat=45.61936&lon=-121.16828&zoom=8&ShowTrace=2024-07-16&leg=0×tamp=1721143871)	Replay (https://aero.motioninfo.com/secure/map/?reply=2024-07-16-15:29&lat=45.61936&lon=-121.16828&zoom=8)
07/16/24 08:26	ARRIVAL	N734KU	N734KU	Single-Prop	Reciprocating	CESSNA	172N	2150	Track (https://aero.motioninfo.com/secure/map/?icao=a9dadcb&lat=45.61936&lon=-121.16828&zoom=8&ShowTrace=2024-07-16&leg=0×tamp=1721143610)	Replay (https://aero.motioninfo.com/secure/map/?reply=2024-07-16-15:24&lat=45.61936&lon=-121.16828&zoom=8)
07/16/24 08:14	DEPARTURE	N48440	N48440	Single-Prop	4 Cycle	CESSNA	152	1650	Track (https://aero.motioninfo.com/secure/map/?icao=a5fa72&lat=45.61936&lon=-121.16828&zoom=8&ShowTrace=2024-07-16&leg=1×tamp=1721142878)	Replay (https://aero.motioninfo.com/secure/map/?reply=2024-07-16-15:14&lat=45.61936&lon=-121.16828&zoom=8)
07/16/24 07:46	DEPARTURE 31	N523KM	N523KM	Single-Prop	Reciprocating	CIRRUS DESIGN CORP	SR22T	3400	Track (https://aero.motioninfo.com/secure/map/?icao=a69500&lat=45.61936&lon=-121.16828&zoom=8&ShowTrace=2024-07-16&leg=1×tamp=1721141214)	Replay (https://aero.motioninfo.com/secure/map/?reply=2024-07-16-14:46&lat=45.61936&lon=-121.16828&zoom=8)
07/16/24 07:41	ARRIVAL 31	N48440	N48440	Single-Prop	4 Cycle	CESSNA	152	1650	Track (https://aero.motioninfo.com/secure/map/?icao=a5fa72&lat=45.61936&lon=-121.16828&zoom=8&ShowTrace=2024-07-16&leg=0×tamp=1721140908)	Replay (https://aero.motioninfo.com/secure/map/?reply=2024-07-16-14:39&lat=45.61936&lon=-121.16828&zoom=8)
07/16/24 07:33	ARRIVAL 31	N860BC	N860BC	Single-Prop	Reciprocating	MOONEY	M20J	2400	Track (https://aero.motioninfo.com/secure/map/?icao=abcefa3&lat=45.61936&lon=-121.16828&zoom=8&ShowTrace=2024-07-16&leg=0×tamp=1721140390)	Replay (https://aero.motioninfo.com/secure/map/?reply=2024-07-16-14:31&lat=45.61936&lon=-121.16828&zoom=8)

Local Time	Operation	Runway	Registration	Call Sign	AC Type	Engine Type	Manufacturer	Model	MGLW	Certification	
07/15/24 18:03	DEPARTURE	31	N800LA	FB231	Single-Prop	Turbo-prop	AIR TRACTOR INC	AT-802A	16000	Track (https://aero.motioninfo.com/secure/map/?icao=aae2d&lat=45.61936&lon=-121.16828&zoom=8&ShowTrace=2024-07-16&leg=1×tamp=1721091794) Replay (https://aero.motioninfo.com/secure/map/?icao=aae2d&lat=45.61936&lon=-121.16828&zoom=8&ShowTrace=2024-07-16&leg=1×tamp=1721091794)	
07/15/24 18:03	DEPARTURE	31	N804RX	FB232	Single-Prop	Turbo-prop	AIR TRACTOR INC	AT-802A	16000	Track (https://aero.motioninfo.com/secure/map/?icao=aa246&lat=45.61936&lon=-121.16828&zoom=8&ShowTrace=2024-07-16&leg=1×tamp=1721091787) Replay (https://aero.motioninfo.com/secure/map/?icao=aa246&lat=45.61936&lon=-121.16828&zoom=8&ShowTrace=2024-07-16&leg=1×tamp=1721091787)	
07/15/24 18:01	DEPARTURE		N9047C	N9047C	Helicopter	Turbo-shaft	BELL HELICOPTER TEXTRON CANADA	206L-4	4300	135	Track (https://aero.motioninfo.com/secure/map/?icao=ac815&lat=45.61936&lon=-121.16828&zoom=8&ShowTrace=2024-07-16&leg=1×tamp=1721091677) Replay (https://aero.motioninfo.com/secure/map/?icao=ac815&lat=45.61936&lon=-121.16828&zoom=8&ShowTrace=2024-07-16&leg=1×tamp=1721091677)
07/15/24 17:12	ARRIVAL		N191CH	N191CH	Helicopter	Turbo-shaft	BOEING V-COLUMBIA HELICOPTERS	107-II	2450		Track (https://aero.motioninfo.com/secure/map/?icao=a16c1c&lat=45.61936&lon=-121.16828&zoom=8&ShowTrace=2024-07-16&leg=0×tamp=1721088722) Replay (https://aero.motioninfo.com/secure/map/?icao=a16c1c&lat=45.61936&lon=-121.16828&zoom=8&ShowTrace=2024-07-16&leg=0×tamp=1721088722)
07/15/24 16:53	DEPARTURE		N601GM		Helicopter	Turbo-shaft	BELL HELICOPTER TEXTRON	206L-1	15220	135/141	Track (https://aero.motioninfo.com/secure/map/?icao=a7cb9&lat=45.61936&lon=-121.16828&zoom=8&ShowTrace=2024-07-15&leg=1×tamp=1721087601) Replay (https://aero.motioninfo.com/secure/map/?icao=a7cb9&lat=45.61936&lon=-121.16828&zoom=8&ShowTrace=2024-07-15&leg=1×tamp=1721087601)
07/15/24 16:26	ARRIVAL		N601GM	N601GM	Helicopter	Turbo-shaft	BELL HELICOPTER TEXTRON	206L-1	15220	135/141	Track (https://aero.motioninfo.com/secure/map/?icao=a676d&lat=45.61936&lon=-121.16828&zoom=8&ShowTrace=2024-07-15&leg=0×tamp=1721085990) Replay (https://aero.motioninfo.com/secure/map/?icao=a676d&lat=45.61936&lon=-121.16828&zoom=8&ShowTrace=2024-07-15&leg=0×tamp=1721085990)
07/15/24 16:05	ARRIVAL		N451LF		Helicopter	Unknown	BELL TEXTRON CANADA LTD	407			Track (https://aero.motioninfo.com/secure/map/?icao=a57cb&lat=45.61936&lon=-121.16828&zoom=8&ShowTrace=2024-07-15&leg=0×tamp=1721084705) Replay (https://aero.motioninfo.com/secure/map/?icao=a57cb&lat=45.61936&lon=-121.16828&zoom=8&ShowTrace=2024-07-15&leg=0×tamp=1721084705)
07/15/24 15:55	ARRIVAL		N3546T	N3546T	Helicopter	Turbo-shaft	BELL	407	6200	135	Track (https://aero.motioninfo.com/secure/map/?icao=a3f6e&lat=45.61936&lon=-121.16828&zoom=8&ShowTrace=2024-07-15&leg=0×tamp=1721084133) Replay (https://aero.motioninfo.com/secure/map/?icao=a3f6e&lat=45.61936&lon=-121.16828&zoom=8&ShowTrace=2024-07-15&leg=0×tamp=1721084133)
07/15/24 15:53	ARRIVAL		N88HX	N88HX	Helicopter	Turbo-shaft	KAMAN AEROSPACE CORP	K-1200	2450		Track (https://aero.motioninfo.com/secure/map/?icao=actc41&lat=45.61936&lon=-121.16828&zoom=8&ShowTrace=2024-07-15&leg=0×tamp=1721084021) Replay (https://aero.motioninfo.com/secure/map/?icao=actc41&lat=45.61936&lon=-121.16828&zoom=8&ShowTrace=2024-07-15&leg=0×tamp=1721084021)
07/15/24 15:23	DEPARTURE		N191CH	N191CH	Helicopter	Turbo-shaft	BOEING V-COLUMBIA HELICOPTERS	107-II	2450		Track (https://aero.motioninfo.com/secure/map/?icao=816c1c&lat=45.61936&lon=-121.16828&zoom=8&ShowTrace=2024-07-15&leg=1×tamp=1721082232) Replay (https://aero.motioninfo.com/secure/map/?icao=816c1c&lat=45.61936&lon=-121.16828&zoom=8&ShowTrace=2024-07-15&leg=1×tamp=1721082232)
07/15/24 15:20	ARRIVAL		N353RC	N353RC	Helicopter	Turbo-shaft	BELL	UH-1H	10500		Track (https://aero.motioninfo.com/secure/map/?icao=acbcc4&lat=45.61936&lon=-121.16828&zoom=8&ShowTrace=2024-07-15&leg=0×tamp=1721082022) Replay (https://aero.motioninfo.com/secure/map/?icao=acbcc4&lat=45.61936&lon=-121.16828&zoom=8&ShowTrace=2024-07-15&leg=0×tamp=1721082022)
07/15/24 15:18	ARRIVAL		N92KT		Helicopter	Unknown	BELL	UH-1H			Track (https://aero.motioninfo.com/secure/map/?icao=acbcc4&lat=45.61936&lon=-121.16828&zoom=8&ShowTrace=2024-07-15&leg=0×tamp=1721081881) Replay (https://aero.motioninfo.com/secure/map/?icao=acbcc4&lat=45.61936&lon=-121.16828&zoom=8&ShowTrace=2024-07-15&leg=0×tamp=1721081881)
07/15/24 14:57	DEPARTURE		N401WY	N401WY	Single-Prop	4 Cycle	LEROUX JOHN F	CCX-1865	1760		Track (https://aero.motioninfo.com/secure/map/?icao=a4b26&lat=45.61936&lon=-121.16828&zoom=8&ShowTrace=2024-07-15&leg=1×tamp=1721080646) Replay (https://aero.motioninfo.com/secure/map/?icao=a4b26&lat=45.61936&lon=-121.16828&zoom=8&ShowTrace=2024-07-15&leg=1×tamp=1721080646)

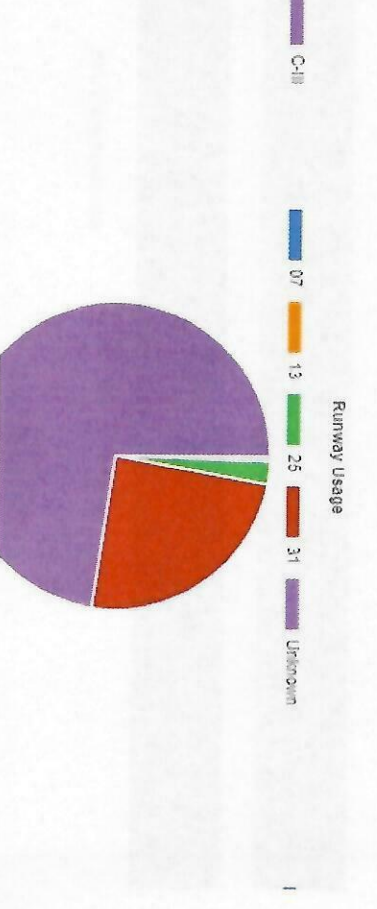
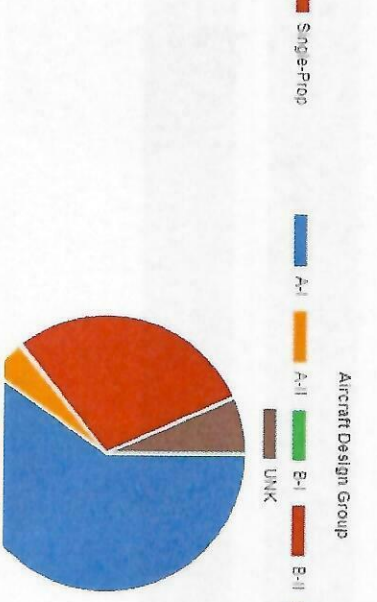
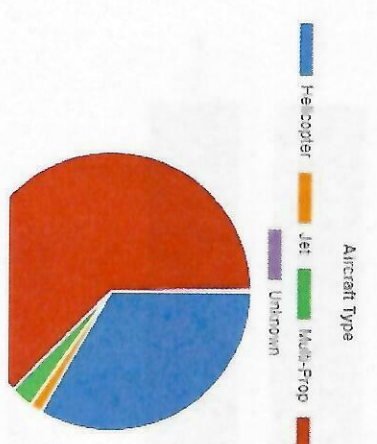
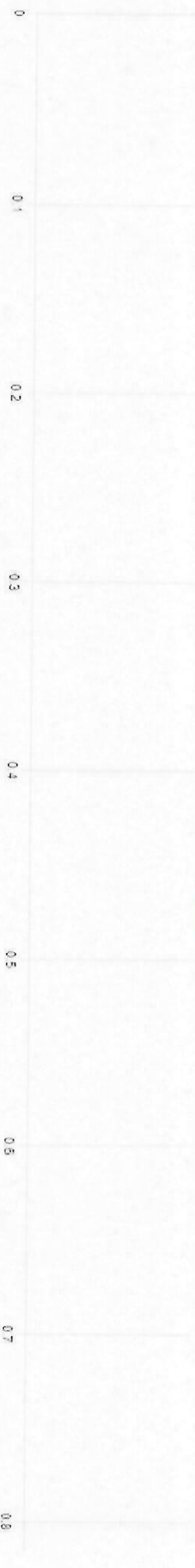
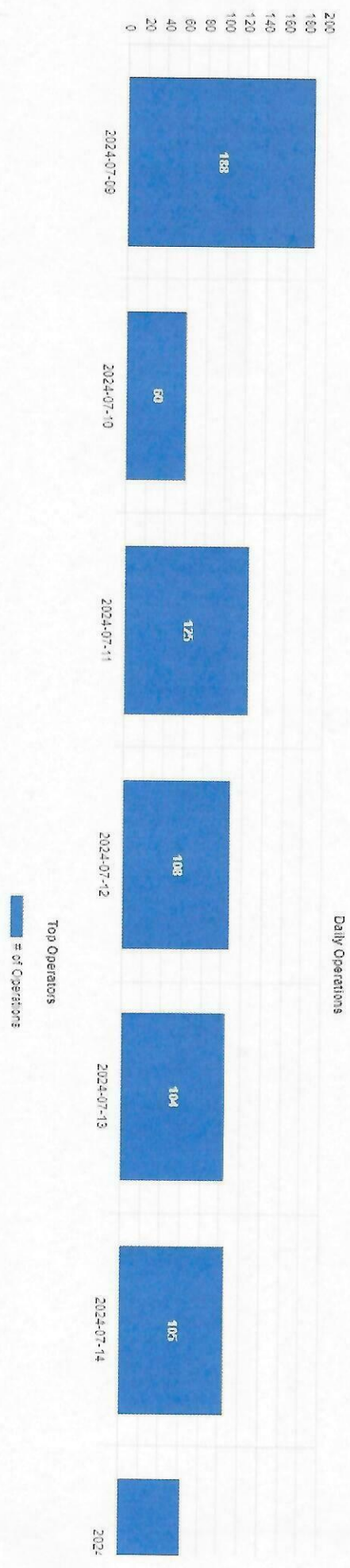
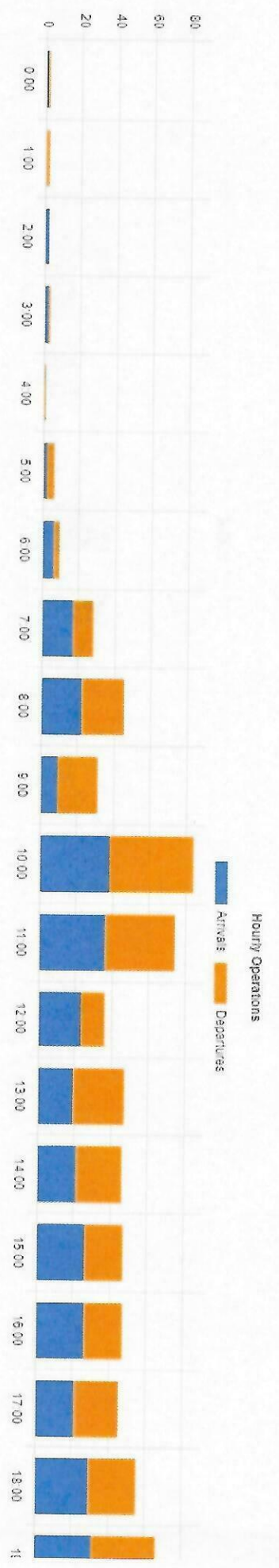
Local Time 07/15/24 11:07

[Operation](#) 31 ARRIVAL
 [Runway](#) 31
 [Registration](#) N1231P
 [Callsign](#)
[AC Type](#) Multi-Prop
 [Engine Type](#) Reciprocating PIPER
 [Manufacturer](#) PA-23
 [Model](#)
[MGLW](#) 3800
 [Certification](#)

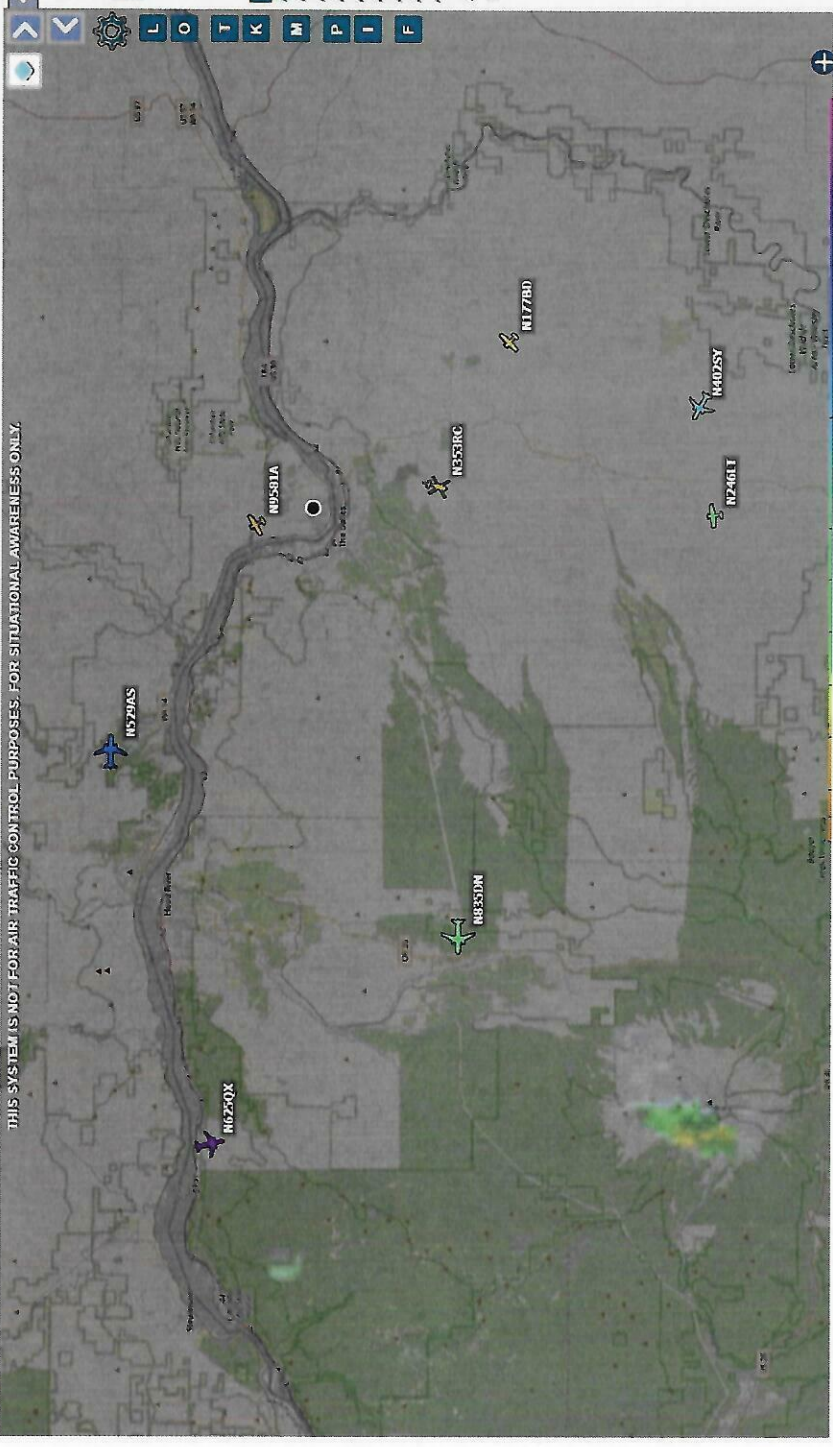
[Track](#) (<https://aero.motioninfo.com/secure/map/?icao=a06160&lat=45.61936&lon=-121.16828&zoom=8&ShowTrace=2024-07-15&leg=0×tamp=1721068652>)
 [Replay](#) (<https://aero.motioninfo.com/secure/map/? replay=2024-07-15-18:05&lat=45.61936&lon=-121.16828&zoom=>)

Showing 1 to 50 of 764 entries

[Previous](#)
[1](#)
[2](#)
[3](#)
[4](#)
[5](#)
[...](#)
[16](#)
[Next](#)



THIS SYSTEM IS NOT FOR AIR TRAFFIC CONTROL PURPOSES. FOR SITUATIONAL AWARENESS ONLY.



Total Aircraft: 4889
On Screen: 9

Search Filters Columns

Search: Clear Search
Jump to Airport or Latitude, Longitude:
Jump: Clear

Hex ID	Call Sign	Registration	Type	Alt (ft)	Spd (kt)	Dest (nm)
A0540B	N9581A	N9581A	C170	1800	68	
A3F16C	N353RC	N353RC	UH1	2000	94	
A1334B	N177BD	N177BD	C152	2850	95	
A6A46E	ASA10	N929AS	B738	24075	450	1
A4B566	SKV3481	N402SY	E75L	19550	371	1
A24755	N246LT	N246LT	SLG4	10450	96	1
A66845	DAL572	N835DN	B739	11650	309	1
A82444	QXE2154	N625DX	E75L	35000	421	2
A8E4E8	AAL2655	N843UW	A321	21675	366	2

ADS-B ADS-C/R UAT MLAT TIS-B Other
 List All Aircraft